



TRAINING MANUAL

Thank you for expressing your interest in Phoenix Computers Blister Packing System. This is part of a suite of Advanced Pharmacy Dispensing and Point of Sale Products.

For information on some of the other products Phoenix have to offer or if you are in need of technical support please contact us via one of the methods shown below.

Phoenix Computer Systems
38 Queen Street
ULVERSTONE
TASMANIA 7315

Phone: 6425 6256

Fax: 6425 5013

AH Support: 0418 141 626

Email: support@phoenixcorp.com.au

www.phoenixcorp.com.au



TABLE OF CONTENTS

TABLE OF CONTENTS

Setting up RexCare for the first time

- 1.1 [Installing RexCare](#)
- 1.2 [Setting up RexCare](#)
 - Entering Business Details*
 - Setting up Printers*
 - Page Setup*
- 1.3 [Connecting to your Dispensary](#)
 - Connection to Rex*
 - Connection to Lockie*
 - Connection to Fred*

Preparing a Blister Pack

- 2.1 [Adding a Patient](#)
 - Adding a Patient Manually*
 - Importing a Patient from Dispensary*
- 2.2 [Creating a Pack](#)
 - Creating a Pack for a Patient*
- 2.3 [The Filling Screen](#)
 - The Filling Grid*
 - The Script List*
 - The Buttons*
- 2.4 [Adding Scripts](#)
 - Manual Script Entry: prescription items*
 - Manual Script Entry: non-prescription items*
 - Adding Prescribers*
 - Importing a Prescription*

TABLE OF CONTENTS

Dispensing a Blister Pack

- 3.1 [Filling a Pack](#)
 - Adding drugs to a pack*
 - Filling a Pack*

- 3.2 [Sealing a Pack](#)
 - Sealing a Hot Seal Pack*
 - Sealing a Cold Seal Pack*

**For further information on Dispensing Blister Packs
see the RexCare Reference Manual**





INSTALLING REXCARE

- Exit all applications currently running
- Insert RexCare CD (red side up) into the CD Drive
- A Menu will appear; click on INSTALL RexCare



- RexCare will begin copying files
- Click Next on the welcome message to begin the installation
- Click CONTINUE to place RexCare in the specified program group (where it will be listed in Start...Programs)
- RexCare will begin Installing Data Access Components
- A progress bar will be displayed indicating the status of the installation

INSTALLING REXCARE

- A message may appear; (file) already exists do you want to keep existing file? Select NO TO ALL
- Progress Bar will continue
- When message appears: RexCare Setup was completed successfully, click OK
- Remove CD from the drive and click on X in top right corner of RexCare Menu.

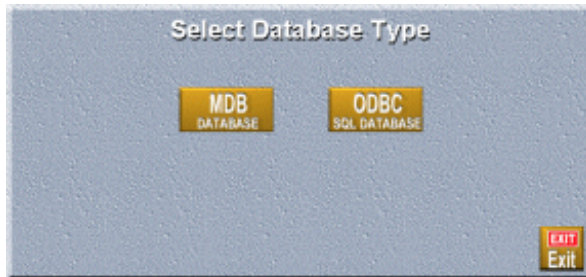
For More Information on Setting Up and Configuring your RexCare Software see sections 1.2 - 1.3





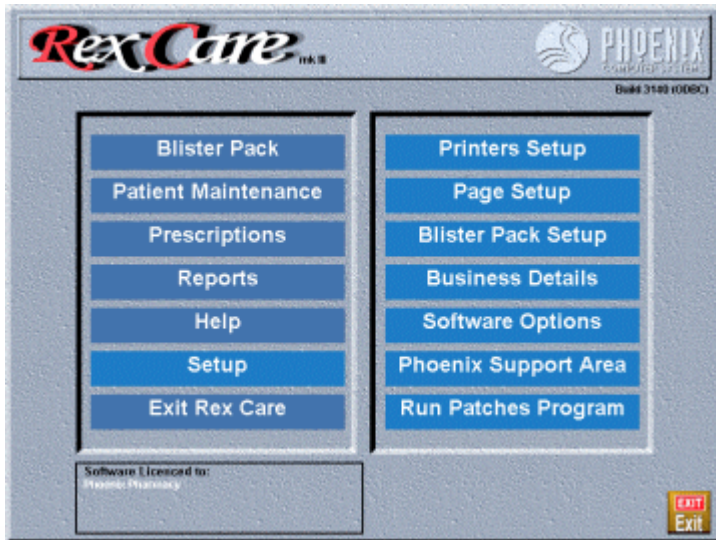
SETTING UP REXCARE

- Install RexCare using instructions from section 1.1 of this manual
- Browse to location that RexCare was installed to (Start... Programs... Phoenix Corp, in most cases)
- Click on RexCare Icon to run program



- Select Database type. MDB is the standard database type, but if you have MSDE or if you are looking to use RECOVER to do your RexCare backup's, you will need to select ODBC. For help on creating this type of database, call Phoenix Support
- RexCare will now create database and run necessary patches
- When this process is complete, it will ask for a key to register RexCare
- If you wish to run RexCare in demonstration mode, click OK. If you have purchased the product, enter your Business Name and Approval number , then call Phoenix Support and quote the challenge number displayed on-screen, to receive a personalised key

SETTING UP REXCARE



Entering Business Details

From the MAIN MENU select:

Setup
Business Details

- Click on the Warning Message to make it disappear
- Enter the Business Details
- Press the **Save**



SETTING UP REXCARE

Setting Up Printers

From the MAIN MENU select:

Setup
Printers Setup

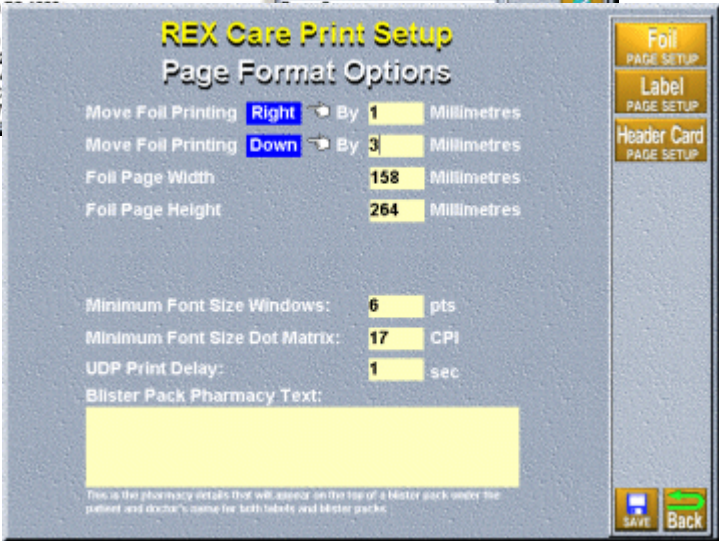
- Wait for message to disappear
- The top left corner will have a picture of each type of printer. Click on a picture to specify which you wish to set
- Select a printer from the list of Printers Available
- Select the Paper Tray
- Select the Printer Type
- Print a Test Page to make sure that printer has been set up correctly, then press the **Save** button

Page Setup

Page Setup is used to enter the width and height of your Foils and Labels.

This is accessible from the Printers Setup screen or from the Main Menu of RexCare (Setup... Page Setup).

Also, when printing, if it is printing slightly off-line or partially getting cut off, you can move your printing up or down, or to the left or right slightly through the Foil Page Setup. The same also applies for printing labels or header cards.





CONNECTING TO YOUR DISPENSARY

From the MAIN MENU select:

Setup
Software Options

Connection to Rex

- From the Software Options screen, select **Rex Link**
- Enter the name of your Rex Database*
- Enter the name of the Server*
- Press the **Save** button

*This can be found in the bottom right corner of Rex's Main Menu

Connection to Lockie (QuickScript)

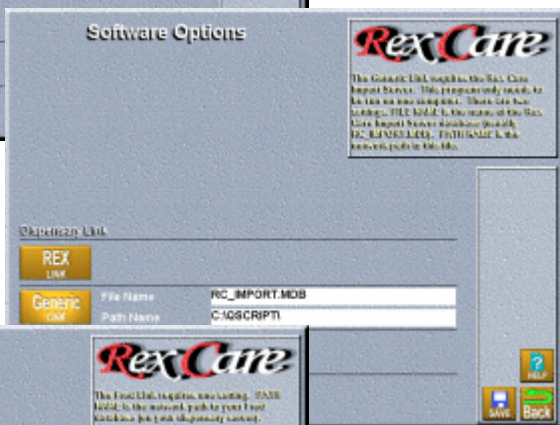
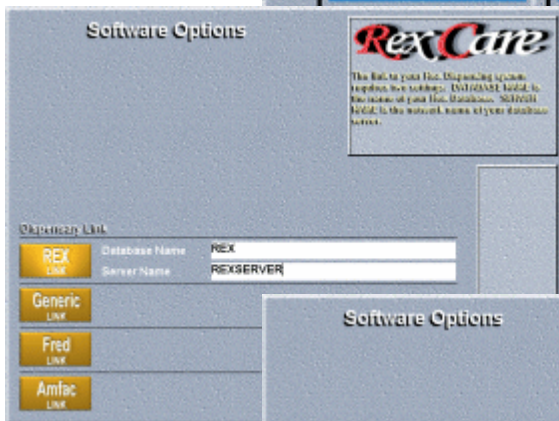
- Ensure that the Import Server is running.
- From the Software Options screen, click once on **Generic Link**
- Enter the name of your Import Database (rc_import.mdb)
- Enter the path to the Import Database*
- Press the **Save** button

*As set in the Import Server's Configuration

Connection to Fred

- From the Software Options screen, select **Fred Link**
- Enter the path to Fred (C:\FRED\)
- Press the **Save** button

SETTING UP REXCARE FOR THE FIRST TIME 1.3



ADDING A PATIENT

Adding a Patient Manually

From the MAIN MENU select:

Blister Pack
Prepare Blister Pack

From the Patient Search Screen select:

Add New Patient

- Enter Details (Required fields are Given and Surname)
- Press the **Save** button

Alternatively, you can access the Add New Patient Screen from the Main Menu, by selecting Patient Maintenance... Add Patient.

Importing a Patient from Dispensary

From the MAIN MENU select:

Blister Pack
Prepare Blister Pack

- Select **Search Rex/Search Dispensary**
- Enter Patient's Name into search box (or part thereof) and press SPACE to begin the search
- Highlight patient you wish to use from search results shown
- Click **OK** or press ENTER
- Select **Yes** to on the message shown to import patient

Add New Patient

Title	Miss
Given Name	Ima
Surname	Sample

Address	12 Long Road
Town	
State	
Post Code	
Telephone	

Patient Search

HILLCREST Angela	216 Wombat Crescent
HILLCREST Bill	30 George St
HILLCREST Elizabeth	14 Love St
HILLCREST Graeme	59 Burke St
HILLCREST Harold	112 Bandraginus Lane
HILLCREST Harry	12 Elizabeth St
HILLCREST Lolita	188 Freemont St
HILLCREST Meksha	62 Short St
HILLCREST Wayne	148 Hillview Road

Search by Patient or Pack ID
hillcrest

Buttons: Search, Add New PATIENT, Show HISTORY, HELP, Save, Back, Ok, Back

Rex Care

Would you like to import this Patient ?

Buttons: No, Yes



CREATING A PACK

Creating a Pack for a Patient

- Select a Patient (see previous page)

From the Blister Packs Currently In Use Screen select:
Add Blister Pack

- Highlight the type of pack you wish to use

(Douglas/Webster 1,2,3,4, Douglas Cold Seal & Webster Jumbo are all multi-dose packs)

- Enter an Alternate Name for the Pack if you wish
- Press the **Save** button



PREPARING A BLISTER PACK

2.2

Miss Ima Sample
12 Long Road
ULVERSTONE TAS 7315

Blister Packs currently in use Status

--	--

Add BLISTER PACK
Remove BLISTER PACK
Prepare BLISTER PACK
HELP Back

Add Blister Pack

Select from available packs

- DOUGLAS 1 (4X7)
- DOUGLAS 2 (4X7)
- DOUGLAS 3 (4X7)
- DOUGLAS 4 (4X7)
- DOUGLAS COLD SEAL 4x7**
- WEBSTER 1 (4X7)
- WEBSTER 2 (4X7)
- WEBSTER 3 (4X7)
- WEBSTER 4 (4X7)
- WEBSTER 5x7
- WEBSTER JUMBO (4x7)
- WEBSTER UNIT DOSE (4x7)

MISS IMA SAMPLE
 12 LONG ROAD
 ULVERSTONE TAS

HELP Back

Prepare Blister Pack

Fri	BEDTIME	DINNER	LUNCH	BREAKFAST	
SUN					<p>MISS IMA SAMPLE 12 LONG ROAD ULVERSTONE TAS 1 SAMPLE PACK #1 (DOU 1 (4X7)) Pack ID: 10</p> <p>pack 1000</p> <p style="background-color: #cccccc; padding: 2px;">Drugs in use</p> <div style="background-color: black; height: 100px; width: 100%;"></div> <p style="text-align: center; background-color: #cccccc; padding: 5px;"> Add SCRIPT Remove SCRIPT Dose SETUP Drug DETAILS Show ALL </p> <p style="text-align: center;"> Print OPTIONS Dispense BLISTER PACK HELP Back </p>
SAT					
FRI					
THU					
WED					
TUE					
MON					

Alternate 1 | Sample p



THE FILLING SCREEN

When preparing a blister pack, the single most important thing is the method by which you pack. The filling screen is where you will spend a lot of your packing time, as it is the whole basis behind RexCare and blister packing.

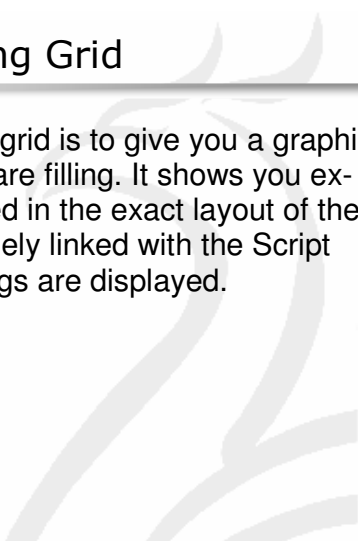
The screen is designed so that all information you require when filling a pack is at your fingertips.

It is split into 3 main areas:

- The filling grid
- The script list
- The buttons

The Filling Grid

The purpose behind the filling grid is to give you a graphical reference to the pack you are filling. It shows you exactly where each drug is placed in the exact layout of the pack before you. It is very closely linked with the Script List, as this dictates which drugs are displayed.



PREPARING A BLISTER PACK

2.3

	BEDTIME	DINNER	LUNCH	BREAKFAST	Prepare Blister Pack
SUN	GOPTEN CAPS 500MCG Qty of 1		GOPTEN CAPS 500MCG Qty of 2		<p>MR EXAMPLE PATIENT 39-41 QUEEN STREET ULVERSTONE TAS E PATIENT PACK #1 (DOU 1 (4X7)) Pack ID: 33</p> <p>Drugs in use</p> <p>AMOXIL CAPS 250MG BENADRYL CAPS 50MG FRUSID TABS 40MG GOPTEN CAPS 500MCG HEMINEURIN CAPS 192MG</p> <p>Take THREE capsules daily</p> <p>Add SCRIPT Remove SCRIPT Dose SETUP Drug DETAILS Show ALL</p> <p>Print OPTIONS Dispense BLISTER PACK ? HELP Back</p>
SAT	GOPTEN CAPS 500MCG Qty of 1		GOPTEN CAPS 500MCG Qty of 2		
FRI	GOPTEN CAPS 500MCG Qty of 1		GOPTEN CAPS 500MCG Qty of 2		
THU	GOPTEN CAPS 500MCG Qty of 1		GOPTEN CAPS 500MCG Qty of 2		
WED	GOPTEN CAPS 500MCG Qty of 1		GOPTEN CAPS 500MCG Qty of 2		
TUE	GOPTEN CAPS 500MCG Qty of 1		GOPTEN CAPS 500MCG Qty of 2		
MON	GOPTEN CAPS 500MCG Qty of 1		GOPTEN CAPS 500MCG Qty of 2		

	BEDTIME	DINNER	LUNCH	BREAKFAST
SUN	GOPTEN CAPS 500MCG Qty of 1		GOPTEN CAPS 500MCG Qty of 2	
SAT	GOPTEN CAPS 500MCG Qty of 1		GOPTEN CAPS 500MCG Qty of 2	
FRI	GOPTEN CAPS 500MCG Qty of 1		GOPTEN CAPS 500MCG Qty of 2	
THU	GOPTEN CAPS 500MCG Qty of 1		GOPTEN CAPS 500MCG Qty of 2	
WED	GOPTEN CAPS 500MCG Qty of 1		GOPTEN CAPS 500MCG Qty of 2	
TUE	GOPTEN CAPS 500MCG Qty of 1		GOPTEN CAPS 500MCG Qty of 2	
MON	GOPTEN CAPS 500MCG Qty of 1		GOPTEN CAPS 500MCG Qty of 2	

The Filling Grid

MR EXAMPLE PATIENT 39-41 QUEEN STREET ULVERSTONE TAS E PATIENT PACK #1 (DOU 1 (4X7)) Pack ID: 33
<p>Drugs in use</p> <p>AMOXIL CAPS 250MG BENADRYL CAPS 50MG FRUSID TABS 40MG GOPTEN CAPS 500MCG HEMINEURIN CAPS 192MG</p> <p>Take THREE capsules daily</p>

The Script List

Add SCRIPT Remove SCRIPT Dose SETUP Drug DETAILS

Print OPTIONS Dispense BLISTER PACK ? HELP Back

The Buttons



THE FILLING SCREEN

The Script List

This lists all the script which have been either manually entered or imported from the dispensary system.

Drugs in this list will be either:

Yellow if they appear in the pack

Dim Yellow if they aren't in this pack, but are in other packs for that patient

Grey if they aren't used in any packs for that patient

Clicking on a drug reveals where that drug has been placed in the filling grid, meaning only one drug is displayed on the screen at a time.

And thus, this is the main benefit of using RexCare; all the other drugs in the pack are removed, so you are only confronted with the information you need to see, which is the drug you are placing into the pack.

THE FILLING SCREEN

The Buttons

On the top row (left to right):

ADD SCRIPT: This is used to add scripts to the Script List, either manual entry or importing scripts

REMOVE SCRIPT: This will remove the highlighted drug from the pack. When removing this drug, Rex Care will also ask you if you wish to remove it from all packs for that patient

DOSE SETUP: Allows you to increase and decrease dosages, increase the dosage while adding the drug name to the column/row heading (unit dose), replace, or remove the highlighted drug

DRUG DETAILS: Shows all details for highlighted drug

SHOW ALL: This button shows you all drugs in your drug list and their placement & dosage on the Filling Grid. You should use this only for reference, not to fill



THE FILLING SCREEN

The Buttons

On the bottom row (left to right):

PRINT OPTIONS: This is where individual parts of the blister pack can be printed separately.

PRINT FOIL: Prints the foil based on what is currently displayed in the Filling Grid

PRINT LABEL: Prints a label for the pack, which contains the patient's name, address, and a pack barcode for multi dose, or the drug name and directions for unit dose

PRINT PACK HISTORY: Generates a report of all changes to specified pack, giving time and date of changes

PREVIEW PACK FOIL: Generates a preview of the pack foil.

PRINT GUIDE: Prints a guide sheet, used to identify the pack layout (to be kept with patients drugs for reference purposes)

PRINT SIGN SHEET: Prints a sign sheet which is used when a staff member, other than the pharmacist, fills the pack and the pharmacist double checks the pack and signs them off.

THE FILLING SCREEN

The Buttons

DISPENSE BLISTER PACK: Prints the foil, the label, and updates the quantities left with the current scripts.

HELP: This brings up the inbuilt help menus.

BACK: This brings you back to the Pack Selection Screen. Pressing Back again will bring you to the Main Menu. Any changes that you have made will be automatically saved by pressing the Back button



The Buttons



ADDING SCRIPTS

There are two types of drugs used in blister packing:

- Prescription
- Non-Prescription

Manual Script Entry: Prescription Items

From the Filling Screen select:

Add Script

- Press the **New Prescription** button
- Enter Required Information

(press space after entering drug name or part thereof to search)

- Press the **Save** button

You may encounter a problem where no prescribers have been added, for information on how to add prescribers see the section on next page titled Adding Prescribers.



ADDING SCRIPTS

For non-prescription items an option is available called OTC (Over the Counter). When highlighted this button changes the required information to suit OTC drugs, only prompting for information which is relevant.

Manual Script Entry: Non-Prescription Items

From the Filling Screen select:
Add Script

- Press the **New Prescription** button
- Press the **OTC Item** button
- Enter Required Information
- Press the **Save** button

Adding Prescribers

By pressing SPACE in the Prescriber field, it will begin a search. At the top of the Search Results, there will be an ADD NEW PRESCRIBER listing.

Highlight this and press ENTER.

From the Add New Prescriber screen, enter the prescriber name and number, then press SAVE.

(This will return you to the Manual Script Entry screen).

Alternatively you can do this from the Main Menu, through Prescriptions... Add Prescriber.



ADDING SCRIPTS

Importing a Prescription

From the Filling Screen select:

Add Script

- Enter Rx Number
- Press the **Search** button
- Press the **OK** button

To use this method your RexCare system must have a connection to your dispensary.

For information on Connecting to your Dispensary see section 1.3 of this manual.



PREPARING A BLISTER PACK

2.4

	BEDTIME	DINNER	LUNCH	BREAKFAST	Prepare Blister Pack
SUN					<p>MR PATIENT EXAMPLE 39-41 QUEEN STREET ULVERSTONE TAS P EXAMPLE PACK #1 (DOU 3 (4X7)) Pack ID: 29</p> <p>Drugs in use</p> <p>[Add SCRIPT] [Remove SCRIPT] [Dose SETUP] [Drug DETAILS] [Show ALL]</p> <p>[Dispense BLISTER PACK] [HELP] [Back]</p>
SAT					
FRI					
THU					
WED					
TUE					
MON					

Mr Example Patient
39-41 Queen Street
ULVERSTONE TAS 7316

Select Prescription

1305/03	1-149066	GOPTEN CAPS 500MCG	[UP] [New PRESCRIPTION]
1305/03	1-149064	HEMINEURIN CAPS 192MG	
1305/03	1-149063	FRUSID TABS 40MG	
1305/03	1-149062	BENADRYL CAPS 60MG	
1305/03	1-149061	AMOXIL CAPS 250MG	

	BEDTIME	DINNER	LUNCH	BREAKFAST	Prepare Blister Pack
SUN					<p>MR EXAMPLE PATIENT 39-41 QUEEN STREET ULVERSTONE TAS E PATIENT PACK #1 (DOU 1 (4X7)) Pack ID: 33</p> <p>Drugs in use AMOXIL CAPS 250MG</p> <p>Take ONE each morning</p> <p>[Add SCRIPT] [Remove SCRIPT] [Dose SETUP] [Drug DETAILS] [Show ALL]</p> <p>[Print OPTIONS] [Dispense BLISTER PACK] [HELP] [Back]</p>
SAT					
FRI					
THU					
WED					
TUE					
MON					

amox



FILLING A PACK

Adding Drugs to a Pack

From the Filling Screen:

- Select the first drug from the Drugs In Use List (Script List)
- Take note of the directions at the bottom of the Drugs In Use List, and fill the pack accordingly, by clicking in an individual cell, or on the column/row heading to fill a whole column/row
- Select the next drug and repeat previous step, until all drugs have been placed in the pack

Filling a Pack

- Click on the first drug from the Drugs In Use List
- Ensure you have entered the correct dosage into the filling grid onscreen
- Fill the blister pack with that drug, checking between screen and pack to check you have the correct dosage in each blister
- Select the next drug and repeat previous step
- Once all drugs are placed, select the **Show All** button to view the general layout of your drugs
- Compare the screen to your pack - do the drugs and doses match?
- Press the **Dispense Blister Pack** button to print your foil, label, and update the quantities of your drugs

	BEDTIME	DINNER	LUNCH	BREAKFAST	Prepare Blister Pack
SUN				AMOXIL CAPS 250MG Qty of 1	MR EXAMPLE PATIENT 39-41 QUEEN STREET SILVERSTONE TAS E PATIENT PACK #1 (DOU 1 (4X7)) Pack ID: 40 Drugs in use AMOXIL CAPS 250MG BENADRYL CAPS 50MG CABASER TABS 1MG DALACIN C CAPS 150MG EXAMPLE DRUG CAPS 250MG EXAMPLE OTC DRUG FRUSID TABS 40MG GOPTEN CAPS 500MCG HEMINEURIN CAPS 192MG IBILEX CAPS 250MG
SAT				AMOXIL CAPS 250MG Qty of 1	
FRI				AMOXIL CAPS 250MG Qty of 1	
THU				AMOXIL CAPS 250MG Qty of 1	
WED				AMOXIL CAPS 250MG Qty of 1	

	BEDTIME	DINNER	LUNCH	BREAKFAST	Prepare Blister Pack
SUN	BENADRYL CAPS 50MG Qty of 1			BENADRYL CAPS 50MG Qty of 1	MR EXAMPLE PATIENT 39-41 QUEEN STREET SILVERSTONE TAS E PATIENT PACK #1 (DOU 1 (4X7)) Pack ID: 40 Drugs in use AMOXIL CAPS 250MG BENADRYL CAPS 50MG CABASER TABS 1MG DALACIN C CAPS 150MG EXAMPLE DRUG CAPS 250MG EXAMPLE OTC DRUG FRUSID TABS 40MG GOPTEN CAPS 500MCG HEMINEURIN CAPS 192MG IBILEX CAPS 250MG
SAT	BENADRYL CAPS 50MG Qty of 1			BENADRYL CAPS 50MG Qty of 1	
FRI	BENADRYL CAPS 50MG Qty of 1			BENADRYL CAPS 50MG Qty of 1	
THU	BENADRYL CAPS 50MG Qty of 1			BENADRYL CAPS 50MG Qty of 1	
WED	BENADRYL CAPS 50MG Qty of 1			BENADRYL CAPS 50MG Qty of 1	

Drug DETAILS Show ALL

? HELP Back

	BEDTIME	DINNER	LUNCH	BREAKFAST	Prepare Blister Pack
SUN	1 x BENZO CAPS 500 1 x CABAS TABS 1MG 1 x FRUSID TABS 40MG	1 x EXAMP OTC DRU 1 x GOPTE CAPS 500 1 x IBILE CAPS 250MG	1 x EXAMP DRUG CAP 1 x GOPTE CAPS 500 2 x HEMIN CAPS 192MG 1 x IBILE CAPS 250MG	1 x HIBID CAPS 250MG 1 x HIBID CAPS 250MG 1 x DALAC C CAPS 15 1 x EXAMP OTC DRU 1 x GOPTE CAPS 500 1 x IBILE CAPS 250MG	MR EXAMPLE PATIENT 39-41 QUEEN STREET SILVERSTONE TAS E PATIENT PACK #1 (DOU 1 (4X7)) Pack ID: 40 Drugs in use AMOXIL CAPS 250MG BENADRYL CAPS 50MG CABASER TABS 1MG DALACIN C CAPS 150MG EXAMPLE DRUG CAPS 250MG EXAMPLE OTC DRUG FRUSID TABS 40MG GOPTEN CAPS 500MCG HEMINEURIN CAPS 192MG IBILEX CAPS 250MG
SAT	1 x BENZO CAPS 500 1 x CABAS TABS 1MG 1 x FRUSID TABS 40MG	1 x EXAMP OTC DRU 1 x GOPTE CAPS 500 1 x IBILE CAPS 250MG	1 x EXAMP DRUG CAP 1 x GOPTE CAPS 500 2 x HEMIN CAPS 192MG 1 x IBILE CAPS 250MG	1 x HIBID CAPS 250MG 1 x HIBID CAPS 250MG 1 x DALAC C CAPS 15 1 x EXAMP OTC DRU 1 x GOPTE CAPS 500 1 x IBILE CAPS 250MG	
FRI	1 x BENZO CAPS 500 1 x CABAS TABS 1MG 1 x FRUSID TABS 40MG	1 x EXAMP OTC DRU 1 x GOPTE CAPS 500 1 x IBILE CAPS 250MG	1 x EXAMP DRUG CAP 1 x GOPTE CAPS 500 2 x HEMIN CAPS 192MG 1 x IBILE CAPS 250MG	1 x HIBID CAPS 250MG 1 x HIBID CAPS 250MG 1 x DALAC C CAPS 15 1 x EXAMP OTC DRU 1 x GOPTE CAPS 500 1 x IBILE CAPS 250MG	
THU	1 x BENZO CAPS 500 1 x CABAS TABS 1MG 1 x FRUSID TABS 40MG	1 x EXAMP OTC DRU 1 x GOPTE CAPS 500 1 x IBILE CAPS 250MG	1 x EXAMP DRUG CAP 1 x GOPTE CAPS 500 2 x HEMIN CAPS 192MG 1 x IBILE CAPS 250MG	1 x HIBID CAPS 250MG 1 x HIBID CAPS 250MG 1 x DALAC C CAPS 15 1 x EXAMP OTC DRU 1 x GOPTE CAPS 500 1 x IBILE CAPS 250MG	
WED	1 x BENZO CAPS 500 1 x CABAS TABS 1MG 1 x FRUSID TABS 40MG	1 x EXAMP OTC DRU 1 x GOPTE CAPS 500 1 x IBILE CAPS 250MG	1 x EXAMP DRUG CAP 1 x GOPTE CAPS 500 2 x HEMIN CAPS 192MG 1 x IBILE CAPS 250MG	1 x HIBID CAPS 250MG 1 x HIBID CAPS 250MG 1 x DALAC C CAPS 15 1 x EXAMP OTC DRU 1 x GOPTE CAPS 500 1 x IBILE CAPS 250MG	
TUE	1 x BENZO CAPS 500 1 x CABAS TABS 1MG 1 x FRUSID TABS 40MG	1 x EXAMP OTC DRU 1 x GOPTE CAPS 500 1 x IBILE CAPS 250MG	1 x EXAMP DRUG CAP 1 x GOPTE CAPS 500 2 x HEMIN CAPS 192MG 1 x IBILE CAPS 250MG	1 x HIBID CAPS 250MG 1 x HIBID CAPS 250MG 1 x DALAC C CAPS 15 1 x EXAMP OTC DRU 1 x GOPTE CAPS 500 1 x IBILE CAPS 250MG	
MON	1 x BENZO CAPS 500 1 x CABAS TABS 1MG 1 x FRUSID TABS 40MG	1 x EXAMP OTC DRU 1 x GOPTE CAPS 500 1 x IBILE CAPS 250MG	1 x EXAMP DRUG CAP 1 x GOPTE CAPS 500 2 x HEMIN CAPS 192MG 1 x IBILE CAPS 250MG	1 x HIBID CAPS 250MG 1 x HIBID CAPS 250MG 1 x DALAC C CAPS 15 1 x EXAMP OTC DRU 1 x GOPTE CAPS 500 1 x IBILE CAPS 250MG	

Add SCRIPT Remove SCRIPT Dose SETUP Drug DETAILS Show ALL

Print OPTIONS Dispense BLISTER PACK ? HELP Back

DISPENSING A BLISTER PACK 3.1



SEALING A PACK

The final step in your blister pack creation is sealing the pack. With Heat Seal packs this is done by ironing the foil to the plastic blister. With Cold Seal, you simply peel the back and stick onto the blister

Sealing a Hot Seal Pack

- Ensure the iron is on medium heat
- Tear the tractor edges from the foil, (if using dot matrix printer) as this makes it easier to align the foil and pack
- Carefully align the foil with the pack, using the left hand edge to get it straight
- Apply brief, even heat to the foil
- Rub your fingers along the edges and between the blisters while the foil is still hot to ensure it is properly attached
- Lift the pack from the guide, neaten edges, and attach label

Sealing a Cold Seal Pack

- Peel the back off the top section of the Cold Seal print-out
- Align with the top of the blister pack and stick down in place
- Slowly peel off each section of the rest of the print-out, securing as you go

Note: An easy way of aligning the foil is to use grid lines (a printing option). Carefully flick the upper edge of the foil up and down, visually aligning the foil lines with the blisters beneath.



	SUPPER	DINNER	LUNCH	FAST	Prepare Blister Pack
MON	1 x BENZO CAPS 500 1 x CABAS TABS 1MG 1 x FRUSID TABS 40MG	1 x EXAMP OTC DRU 1 x GOPTEN CAPS 500 1 x IBILEX CAPS 250MG	1 x EXAMP DRUG CAP 1 x GOPTEN CAPS 500 2 x HEMINA CAPS 192MG 1 x IBILEX CAPS 250MG	1 x HMO CAPS 250MG 1 x BENZO CAPS 500 1 x DALACIN C CAPS 15 1 x EXAMP OTC DRU 1 x GOPTEN CAPS 500 1 x IBILEX CAPS 250MG	<p>MR EXAMPLE PATIENT 29-41 QUEEN STREET SILVERSTONE TAS E PATIENT PACK #1 (WEB 3 (4X7)) Pack ID: 46</p> <p>Drugs in use</p> <p>AMOXIL CAPS 250MG BENADRYL CAPS 50MG CABASER TABS 1MG DALACIN C CAPS 150MG EXAMPLE DRUG CAPS 250MG EXAMPLE OTC DRUG FRUSID TABS 40MG GOPTEN CAPS 500MCG HEMINEURIN CAPS 192MG IBILEX CAPS 250MG</p>
TUE	1 x BENZO CAPS 500 1 x CABAS TABS 1MG 1 x FRUSID TABS 40MG	1 x EXAMP OTC DRU 1 x GOPTEN CAPS 500 1 x IBILEX CAPS 250MG	1 x EXAMP DRUG CAP 1 x GOPTEN CAPS 500 2 x HEMINA CAPS 192MG 1 x IBILEX CAPS 250MG	1 x HMO CAPS 250MG 1 x BENZO CAPS 500 1 x DALACIN C CAPS 15 1 x EXAMP OTC DRU 1 x GOPTEN CAPS 500 1 x IBILEX CAPS 250MG	
WED	1 x BENZO CAPS 500 1 x CABAS TABS 1MG 1 x FRUSID TABS 40MG	1 x EXAMP OTC DRU 1 x GOPTEN CAPS 500 1 x IBILEX CAPS 250MG	1 x EXAMP DRUG CAP 1 x GOPTEN CAPS 500 2 x HEMINA CAPS 192MG 1 x IBILEX CAPS 250MG	1 x HMO CAPS 250MG 1 x BENZO CAPS 500 1 x DALACIN C CAPS 15 1 x EXAMP OTC DRU 1 x GOPTEN CAPS 500 1 x IBILEX CAPS 250MG	
THU	1 x BENZO CAPS 500 1 x CABAS TABS 1MG 1 x FRUSID TABS 40MG	1 x EXAMP OTC DRU 1 x GOPTEN CAPS 500 1 x IBILEX CAPS 250MG	1 x EXAMP DRUG CAP 1 x GOPTEN CAPS 500 2 x HEMINA CAPS 192MG 1 x IBILEX CAPS 250MG	1 x HMO CAPS 250MG 1 x BENZO CAPS 500 1 x DALACIN C CAPS 15 1 x EXAMP OTC DRU 1 x GOPTEN CAPS 500 1 x IBILEX CAPS 250MG	
FRI	1 x BENZO CAPS 500 1 x CABAS TABS 1MG 1 x FRUSID TABS 40MG	1 x EXAMP OTC DRU 1 x GOPTEN CAPS 500 1 x IBILEX CAPS 250MG	1 x EXAMP DRUG CAP 1 x GOPTEN CAPS 500 2 x HEMINA CAPS 192MG 1 x IBILEX CAPS 250MG	1 x HMO CAPS 250MG 1 x BENZO CAPS 500 1 x DALACIN C CAPS 15 1 x EXAMP OTC DRU 1 x GOPTEN CAPS 500 1 x IBILEX CAPS 250MG	
SAT	1 x BENZO LI 1 x CABAS TN 1 x FRUSID TN				
SUN	1 x BENZO LI 1 x CABAS TN 1 x FRUSID TN				

MR EXAMPLE PATIENT
29-41 QUEEN STREET SILVERSTONE TAS
E PATIENT PACK #1 (WEB 3 (4X7))
Pack ID: 46

Drugs in use

AMOXIL CAPS 250MG
BENADRYL CAPS 50MG
CABASER TABS 1MG
DALACIN C CAPS 150MG
EXAMPLE DRUG CAPS 250MG
EXAMPLE OTC DRUG
FRUSID TABS 40MG
GOPTEN CAPS 500MCG
HEMINEURIN CAPS 192MG
IBILEX CAPS 250MG

Next PAGE

Previous PAGE

First PAGE

Last PAGE

ZOOM IN

ZOOM OUT

Back



For further information on Dispensing Blister Packs see the RexCare Reference Manual

Phoenix Computer Systems
39-41 Queen Street
ULVERSTONE
TASMANIA 7315

Phone: 6425 6256

Fax: 6425 5013

AH Support: 0418 141 626

Email: support@phoenixcorp.com.au

www.phoenixcorp.com.au